

TRANSVERSE CATTLE GRID H.20



STALL FLOORING

For cattle farming Fattori srl manufactures grids according to the requirements of the European standard EN 12737:2007 which imposes precise characteristics:

- Rck 40 concrete
- guaranteed durability in XC3 classified environments
- high quality B450C steel calculated to ensure the required performance
- slots with a width of 3.20 cm and rounded to limit the possibility of injury to the feet
- production lots that allow the traceability of the raw materials used and provide further guarantees for the purchaser

The production process is monitored at every stage, starting from the incoming raw materials, and in every single process until the loading of the finished product.

It is a cutting edge product at a European level.

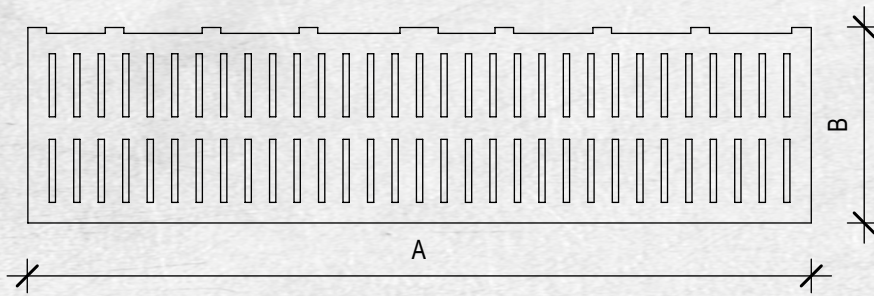


FATTORI
SISTEMI E STRUTTURE IN CEMENTO ARMATO

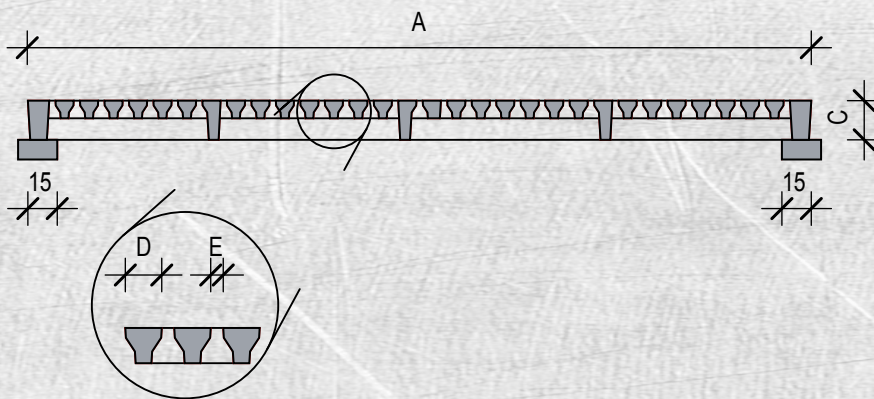
Via F. Cavallotti, 298 - 25018 Montichiari (Bs-Italy) - Tel. +39 030.963291 - Fax +39 030.9964333
www.gffattori.com - info@gffattori.it

TECHNICAL SPECIFICATIONS

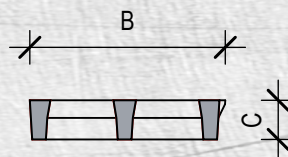
PLAN



LONGITUDINAL SECTION PLAN VIEW



TRANSVERSE SECTION VIEW



TECHNICAL CHARACTERISTICS OF THE ELEMENT

VARIABLE LIVE LOAD:

1500-1800 kg/mq in addition to its own weight

CONCRETE:

R_{ck} formwork ≥ 20 N/mm²

R_{ck} in 28 day ≥ 40 N/mm²

STEEL B450C checked:

f_{yk} ≥ 450 N/mm²

f_{tk} ≥ 540 N/mm²

WELDMESH:

Steel B450A

EXPOSURE CLASS XC3

bar cover 2,5cm

bar free interspace ≥ 2 cm $\geq \varnothing$ max

REI 30

TOLLERANCES

length $\pm 1,0$ cm

height $\pm 0,5$ cm

width $\pm 1,0$ cm

mild reinforcement $\pm 1,0$ cm



1982-CPR-331
EN 12737

ITEM CODE	A cm	B cm	C cm	D cm	E cm	Flow Kg/mq	Weight Kg/cad	Empty mq	Full mq	Ratio Empty/ full
GBT20010020	200	100	20	9,3	3,2	1800	434	0,354	1,642	21%
GBT25010020	250	100	20	9,3	3,2	1800	543	0,448	2,046	22%
GBT30010020	300	100	20	9,3	3,2	1800	651	0,542	2,452	22%
GBT35010020	350	100	20	9,3	3,2	1500	760	0,637	2,856	22%
GBT40010020	400	100	20	9,3	3,2	1500	868	0,731	3,260	22%

The table shows the standard sizes; we can also produce non-standard sizes upon prior arrangements with our offices.

The sizes shown are indicative, **FATTORI** reserves the right to make any changes at any time without prior notice.