

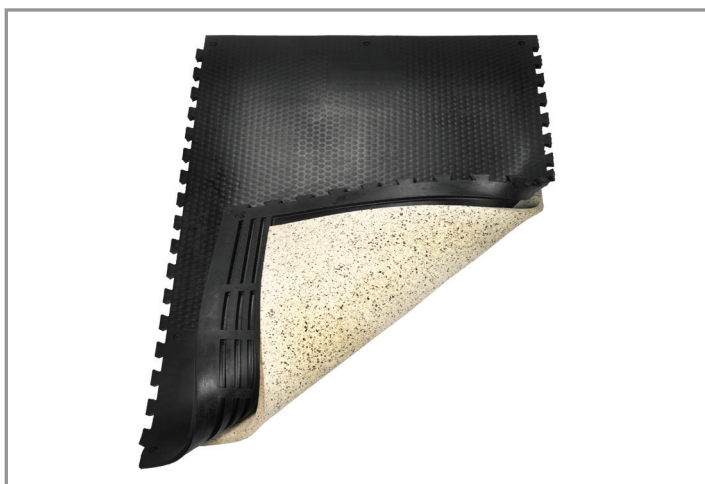
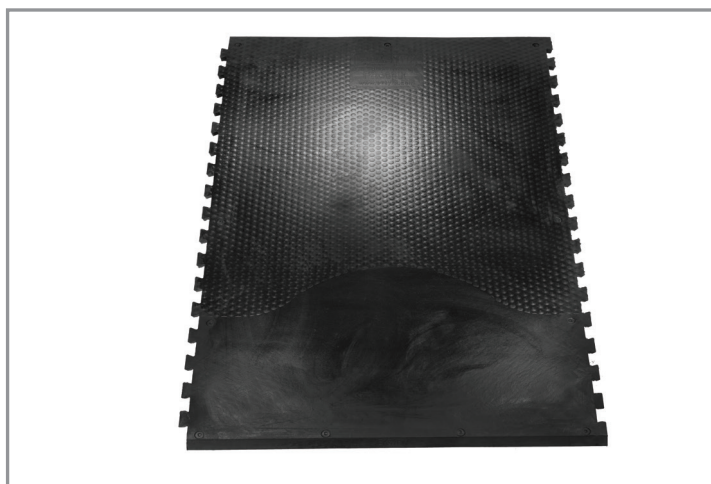
EASYFIX PHOENIX MATTRESS FOR DAIRY COWS (SINGLE-LAYER MATTRESS)



EASYFIX Phoenix is a cubicle mattress that provides the cow with a higher level of comfort. The cow's natural resting position is supported by a soft zone to lie down on, on the mattress.

The cubicle mattress has a layer of foam rubber and it is held in place on the two sides with rubber edging sloping on the back edge.

ADVANTAGES	CHARACTERISTICS
<ul style="list-style-type: none"> • It increases the comfort and well-being of the cow. • It increases productivity - milk production. • The open cell technology of the foam provides excellent levels of comfort, durability and compactness. • Suitable for D.I.Y. type installation and with all measurements. • The width can be increased with the addition of spacers. 	<ul style="list-style-type: none"> • Natural rubber compound. • Held in place on two sides. • 500 micron sealed casing that contains the 25 mm latex foam. • 50% latex foam and 50% polyurethane. • Non-abrasive edging on the rear side.
DIMENSIONS	GUARANTEE
1125mm (width) x 1800mm (thickness) x 37mm*	10 years.



*Note: All the dimensions offered are subject to rubber manufacturing tolerances.

EASYFIX NEPTUNE (DOUBLE LAYER MATTRESS)

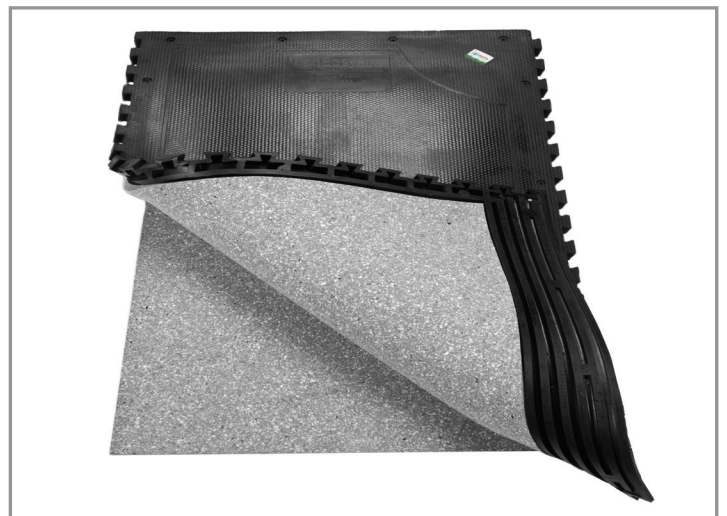
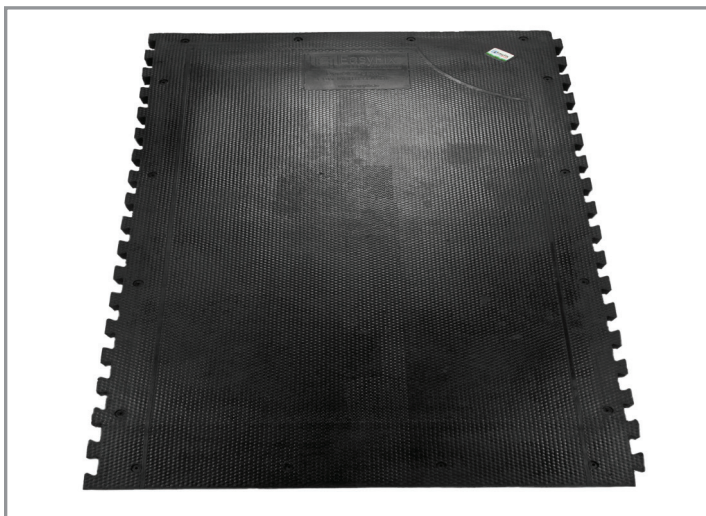


EASYFIX Neptune is a cubicle mattress that provides the cow with maximum comfort.

The mattress has a 50 mm latex foam layer, it is held in place on the two sides with sloping rubber edging on the rear edge.

The cow's natural resting position is supported by a soft zone to lie down on in the middle of the mattress.

ADVANTAGES	CHARACTERISTICS
<ul style="list-style-type: none"> • It increases the comfort and well-being of the cow. • It increases productivity - milk production. • The open cell technology of the foam provides excellent levels of comfort, durability and compactness. • Suitable for D.I.Y. type installation and with all measurements. • The width can be increased with the addition of spacers. 	<ul style="list-style-type: none"> • Natural rubber compound. • Held in place on two sides. • 500 micron sealed casing that contains the 50mm latex foam. • 50% latex foam and 50% polyurethane. • Non-abrasive edging on the rear side.
DIMENSIONS	GUARANTEE
1,125mm x 1,830mm x 62mm*	10 years.



*Note: All the dimensions offered are subject to rubber manufacturing tolerances.

DEALER IN ITALY