



GRID SUPPORTING WALL H.220



GRID SUPPORTING WALL

To make the effluent collection tanks Fattori srl has introduced a new element that completes the existing range of products.

The grid supporting wall is represented by elements with a maximum length five metres that, once positioned on the perfectly flat support bands create the collection tank up to a maximum of 220 cm.

The assembly operations are completed with the sealing of the joints and the laying of the internal flooring that functions as anchorage for the elements themselves.

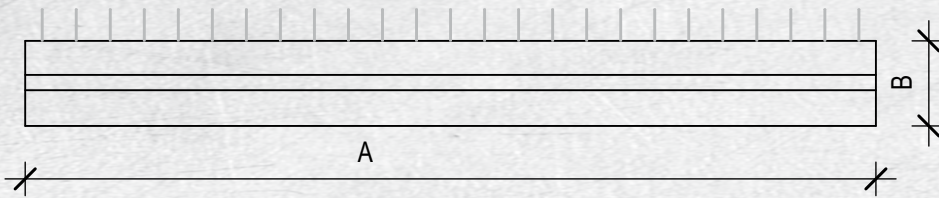


FATTORI
SISTEMI E STRUTTURE IN CEMENTO ARMATO

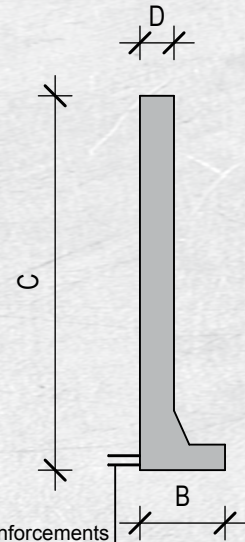
Via F. Cavallotti, 298 - 25018 Montichiari (Bs - Italy) - Tel. 030.963291 - Fax 030.9964333
www.gffattori.fr - info@gffattori.it

TECHNICAL PRODUCT DATA SHEET

PLAN

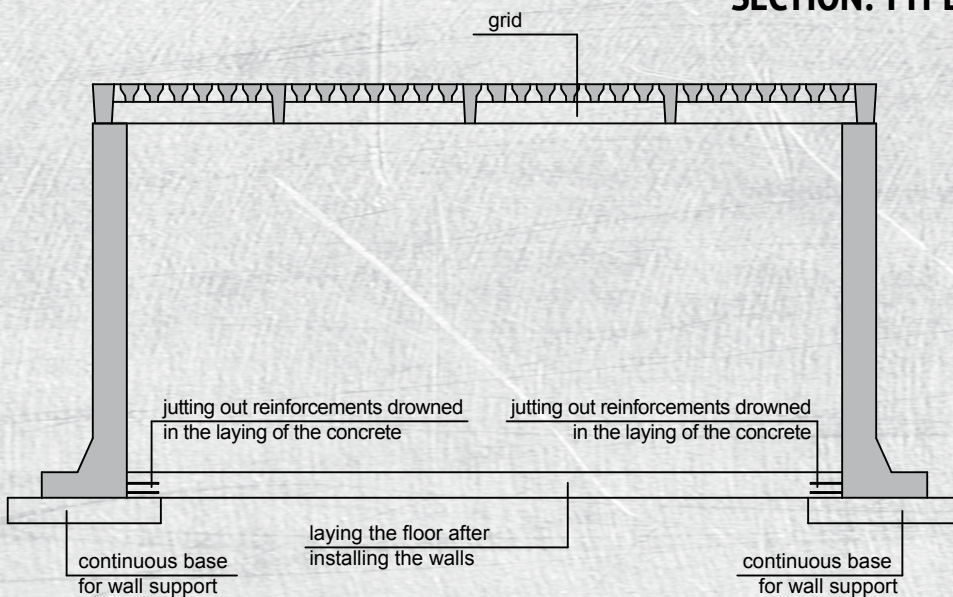


SECTION



jutting out reinforcements
drowned in the laying of the concrete

SECTION: TYPE



TECHNICAL CHARACTERISTICS

CONCRETE:

R'ck scassero ≥ 20 N/mm²

R'ck a 28 gg ≥ 40 N/mm²

STEEL B450C Checked:

f_{yk} ≥ 450 N/mm²

f_{tk} ≥ 540 N/mm²

WELDMESH:

STEEL B450A

EXPOSURE CLASS XC3

bar cover 2,5 cm

bar free interspace ≥ 2 cm $\geq \emptyset$ max

R.E.I. 30

TOLERANCES

length $\pm 1,0$ cm

height $\pm 0,5$ cm

width $\pm 1,0$ cm

mild reinforcement $\pm 1,0$ cm

ARTICLE CODE	A	B	C	D	Weight kg/cad
MURLPG250220	500	50	220	20	6080

The table shows the standard sizes; we can also produce non-standard sizes upon prior arrangements with our offices

The sizes shown are indicative, **FATTORI** reserves the right to make any changes at any time without prior notice.